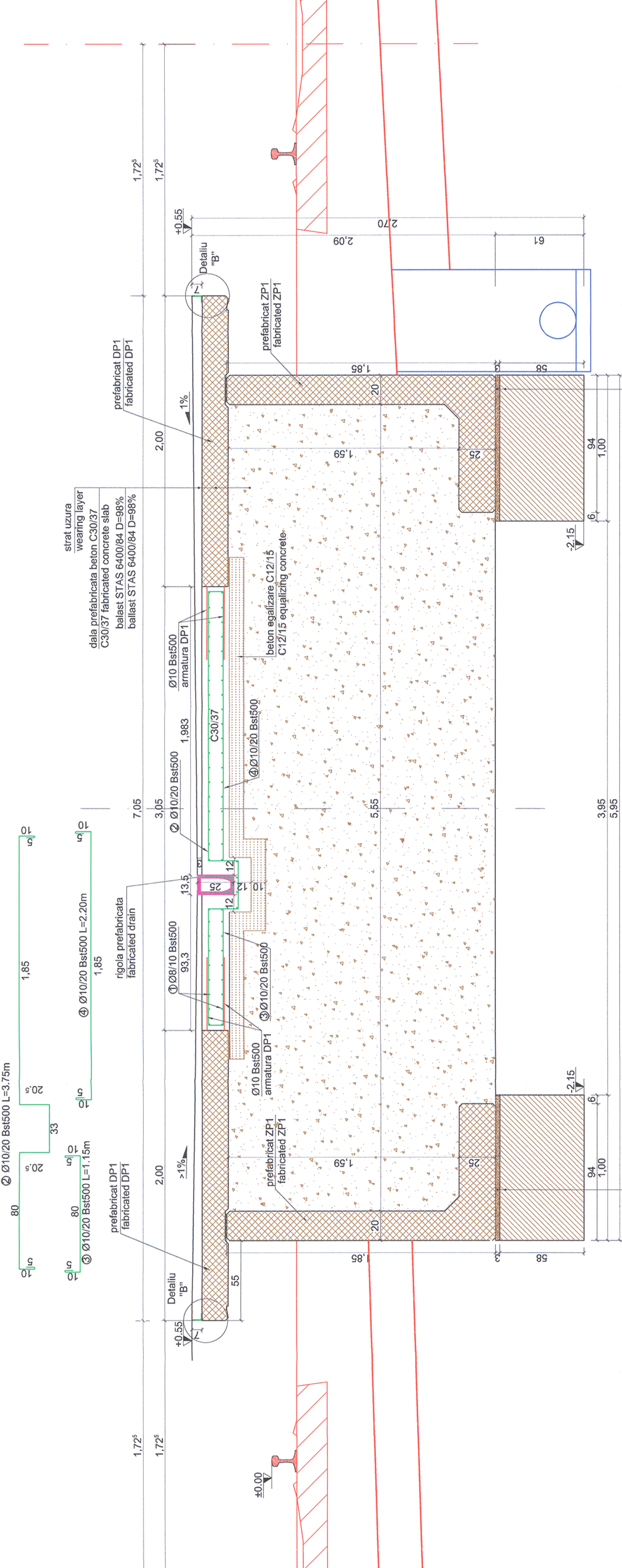


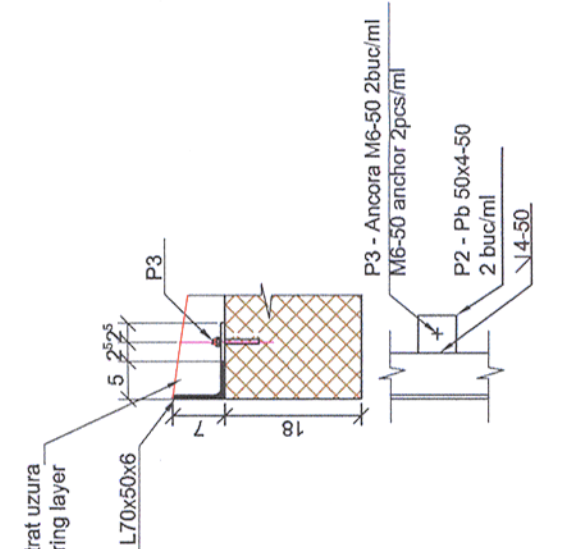
SECTIUNE / SECTION A-A
Scara / Scale 1:20



CLASA DE IMPORTANTA A CONSTRUCTIEI
CONFORM P100/1-2006 ESTE III; CATEGORIA DE
IMPORTANTA CONFORM H.G. nr. 766/97 este "C".

THE CONSTRUCTION IMPORTANCE CLASS,
ACCORDING TO P100/1-2006, IS III;
CATEGORY, ACCORDING TO H.G. 766/97 IS "C"

DETALIU / DETAIL "B"
Scara / Scale 1:10



Extras de laminate (pe ml de peron) /
Rolled steel extract (by ml platform)

Pozitie / Position	Element / Element	Lungime / Length [m]	Greutate / Weight [kg]	
			Pe U.M	Total
P1	L70x50x6	1.00	5.41	10.82
P2	Pb 50x4-50	0.05	1.57	0.0785
P3	M6-50	-	-	0.03
Total / Total [kg]			11.254	
Sudura / Welding [%]			0.33762	
Greutate Totala / Total weight [kg]			11.5916	

NOTE 1:
The following technology will be applied in case when the prefabricated elements from the line will be removed in order to execute the line works with heavy track machines:

1. the asphalt uncovering in the concrete cast in position area between prefabricated elements (DP)
2. removing the cast-in-place concrete
3. cutting the reinforcements in the central area of the concrete cast in position (at min. 1.50 m from the platform edge)
4. removing the prefabricated elements and storing them in the same section on the platform exterior side (the removed prefabricated unit is stored on the one which is not removed)
5. track works execution
6. renewing the platform by mounting prefabricated elements on the initial position
7. while mounting the prefabricated elements on the platform it is ensured the continuity of reinforcement that were cut at point 3, by help of Bst500 welded fishplates having Ø 10mm and l = 250 mm
8. the removed area is casted-in-place with concrete C 30/37 and the uncovered asphalt is renewed.

Toate tipurile de oțel (în special Bst 500) vor avea obligatoriu clasa de ductilitate C.
All types of steel (especially Bst 500) will mandatory have the ductility class C.

MATERIALE:
Beton de egalizare C12/15 CEM III/A-S 32.5 N ; sort 0-31; A/C : 0.75 ;
Beton armat de monolitizare C30/37 CEM III/A-S 42.5 N; sort 0-16; A/C : 0.55;
Mortar M100-T
Armatura Bst500
Clasa de expunere: XC4 , XD3 , XF4

MATERIALS:
Equalization concrete C12/15 CEM III/A-S 32.5 N ; sort 0-31; A/C : 0.75 ;
Reinforced concrete C30/37 CEM III/A-S 42.5 N; sort 0-16; A/C : 0.55;
Mortar M100-T
Reinforcement Bst500
Exposure class: XC4 , XD3 , XF4

Extras de armatura /
Reinforcement extract

Element	Marca / Mark	Diametru / Diameter (mm)	Nr. Buc. / No. of pieces	Lungime / Length (m)	Bst500(S500)
sectiune A-A (pe ml de peron)	1	8	60	1.00	60.00
	2	10	5	3.75	18.75
	3	10	5	1.15	5.75
	4	10	5	2.20	11.00
Lungime totala pe diametre / Total length on diameter (m)					60.00
Masa pe metru / Mass on meter (kg/m)					0.395
Masa pe diametre / Mass on diameter (kg)					23.70
Masa totala pe tip de oțel / Total mass on steel type (kg)					46.00

Acest plan anuleaza si inlocuieste planul nr. PT.03.03.22.RE.01.002 elaborat la data 01.2013.
This layout plan canceled and replaced layout plan no. PT.03.03.22.RE.01.002 prepared on 01.2013.

Verificator / Expert
Checker / Expert

Ceirișă
Requirement

Referat / Raport
Report / Report

Referat / Raport
Report / Report

Referat / Raport
Report / Report

European Investment Bank

MINISTERUL TRANSPORTURILOR

BENEFICIAR / BENEFICIARY :

COMPANIA NAȚIONALĂ DE CĂI FERATE "CFR" SA

PROIECTANT / DESIGNER:

PÖYRY

Aprobat / Approved

Verificat / Checked

Subcontractant / Subcontractor

Aprobat / Approved

Proiectat / Designed

Șef de echipă / Team leader

Expert Cheie / Key Expert

A.M. Baticu

D.Oprescu

01.2013

01.2013

01.2013

01.2013

Proiect 9i
35311.1

Faza / Phase:
PTh+CS / TD+TS

Denumire desen / Drawing name:
Secțiune A-A - Zona curentă peron 7.05m - Stația Ilia
Section A-A - Current area of platform 7.05m - Ilia Station

Scara / Scale
1:10;1:20

Revizia / Revision
1/05.2013

Cod desen / Drawing Code
PT.03.03.22.RE.01.002

Nr / No
02/08